

身歷其境 安全要識驚

位於職安健學院的「身歷其境」職安健體驗中心採用虛擬現實、三維空間仿真技術及沉浸式科技，讓學員在仿真度極高的環境進行工作任務，並安全地「經歷」工作意外，以體會做足安全措施的重要性。



為何要「身歷其境」?



整個項目由創新及科技基金的「公營機構試用計劃」資助推行，並與香港大學工業及製造系統工程系合作設計虛擬工作場景，首個為懸空式吊棚場景。

「身歷其境」職安健體驗中心

職安局職安健學院 新界青衣涌美路62號 電話：3106 2000 電子郵件: trg@oshc.org.hk

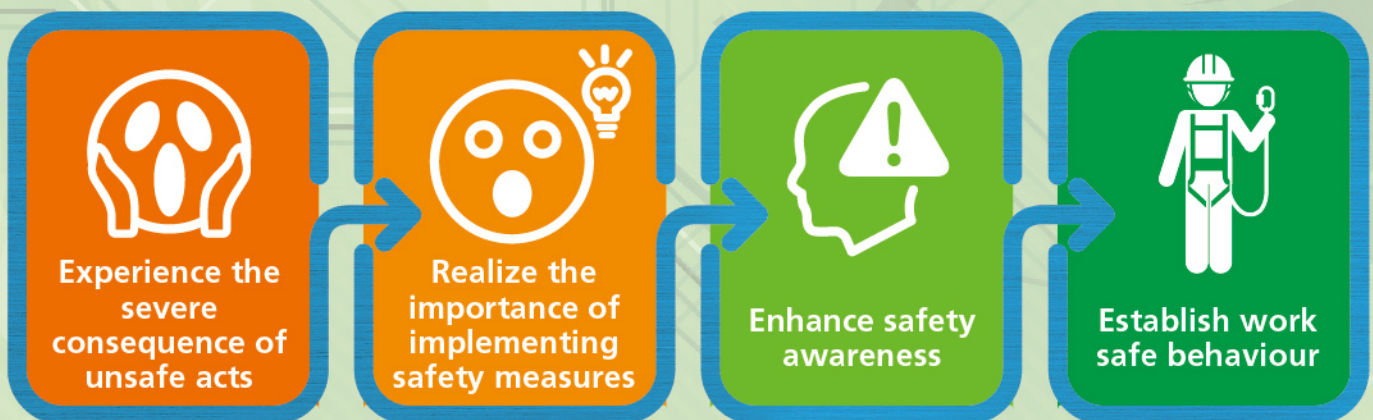


Learn Safety by Experiencing the "Accident"

The **OSH Immersive Experience Hall** applies VR technology on a 3D interface to create immersive virtual environments. Trainee will immerse into a "near real" working environment to conduct daily work and experience an accident safely in the system so as to realize the importance of adhering to safety measures.



Why experiential learning?



OSH Immersive Experience Hall is sponsored by the "Public Sector Trial Scheme" under the Innovation and Technology Fund. It is a joint project with IMSE Department of HKU on developing the virtual working scenes. The truss-out bamboo scaffold work environment is the first scenario.

OSHC Occupational Safety and Health Academy

62 Chung Mei Road, Tsing Yi, New Territories Tel: 3106 2000 Email: trg@oshc.org.hk